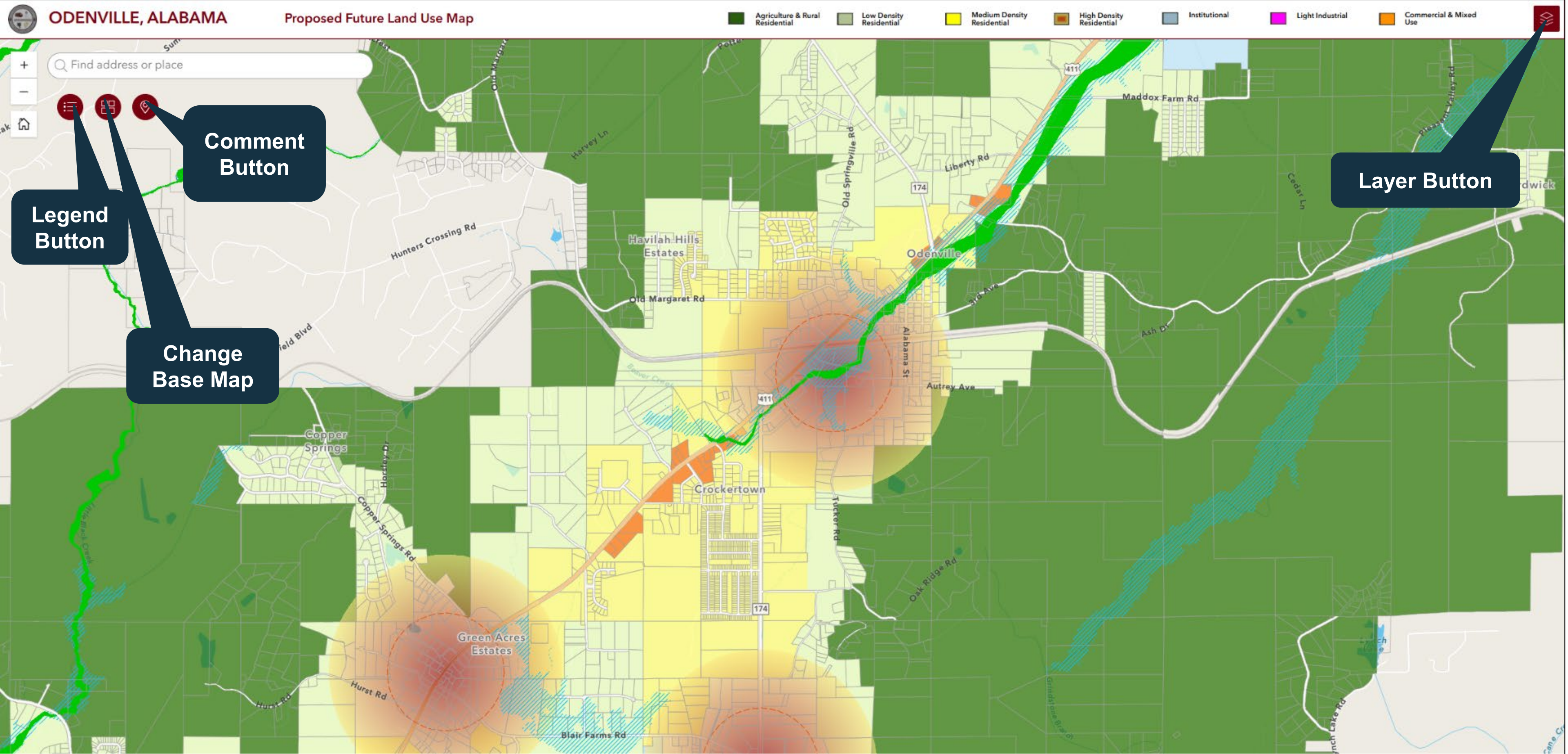


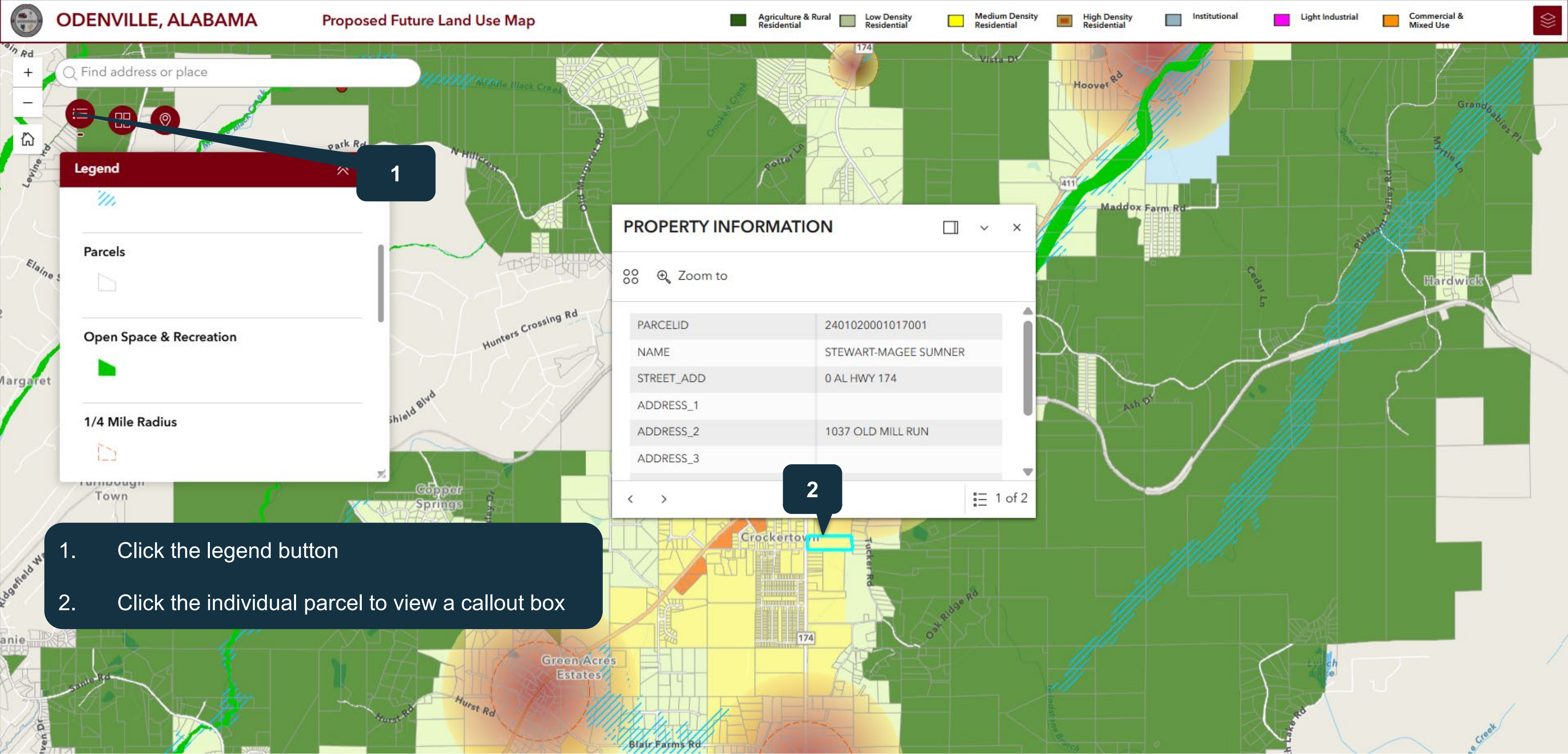
**How to Comment  
on the Draft Future Land Use Map**



# About the online map...



# To learn about the proposed use of a parcel:



1

**PROPERTY INFORMATION**

Zoom to

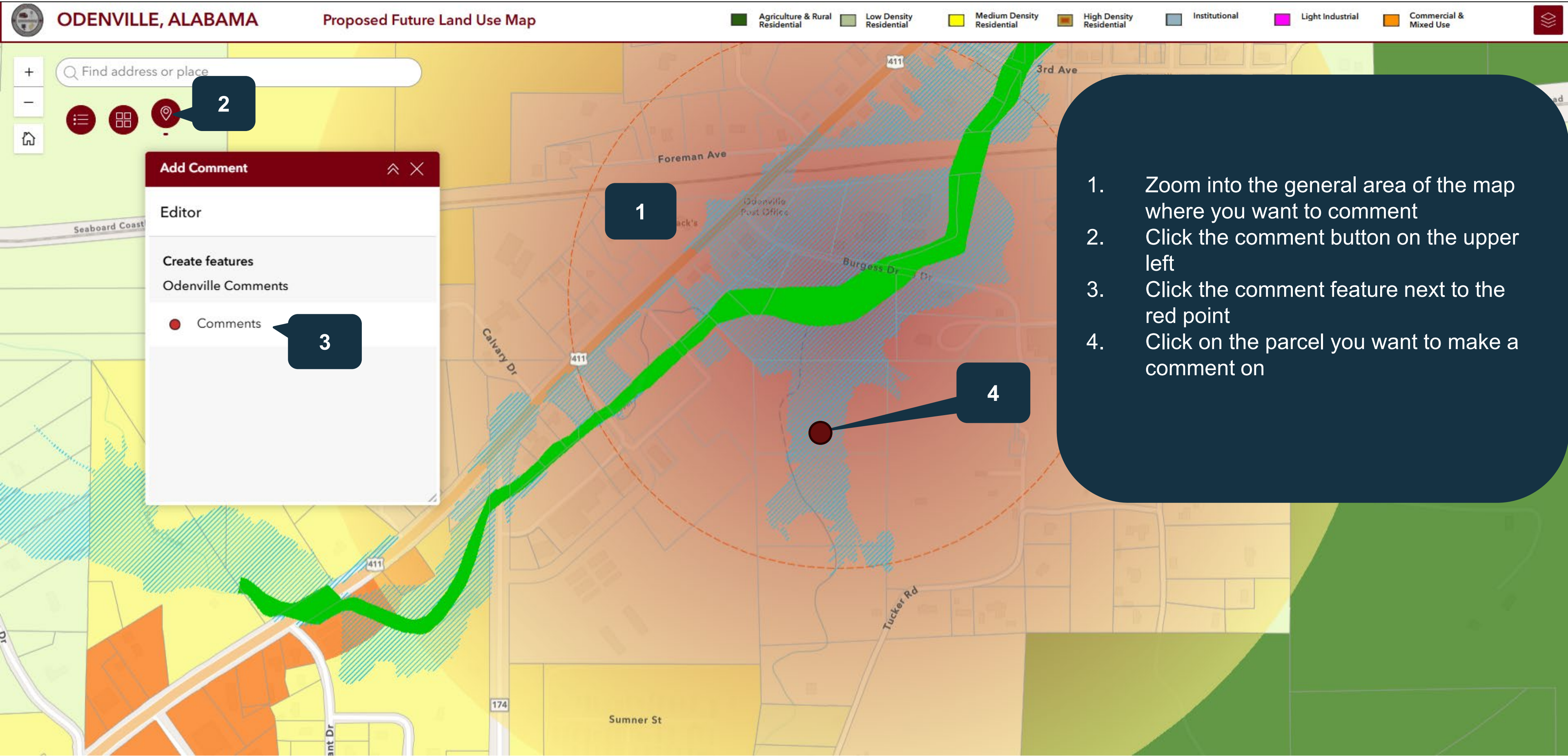
PARCELID	2401020001017001
NAME	STEWART-MAGEE SUMNER
STREET_ADD	0 AL HWY 174
ADDRESS_1	1037 OLD MILL RUN
ADDRESS_2	1037 OLD MILL RUN
ADDRESS_3	1037 OLD MILL RUN

1 of 2

2

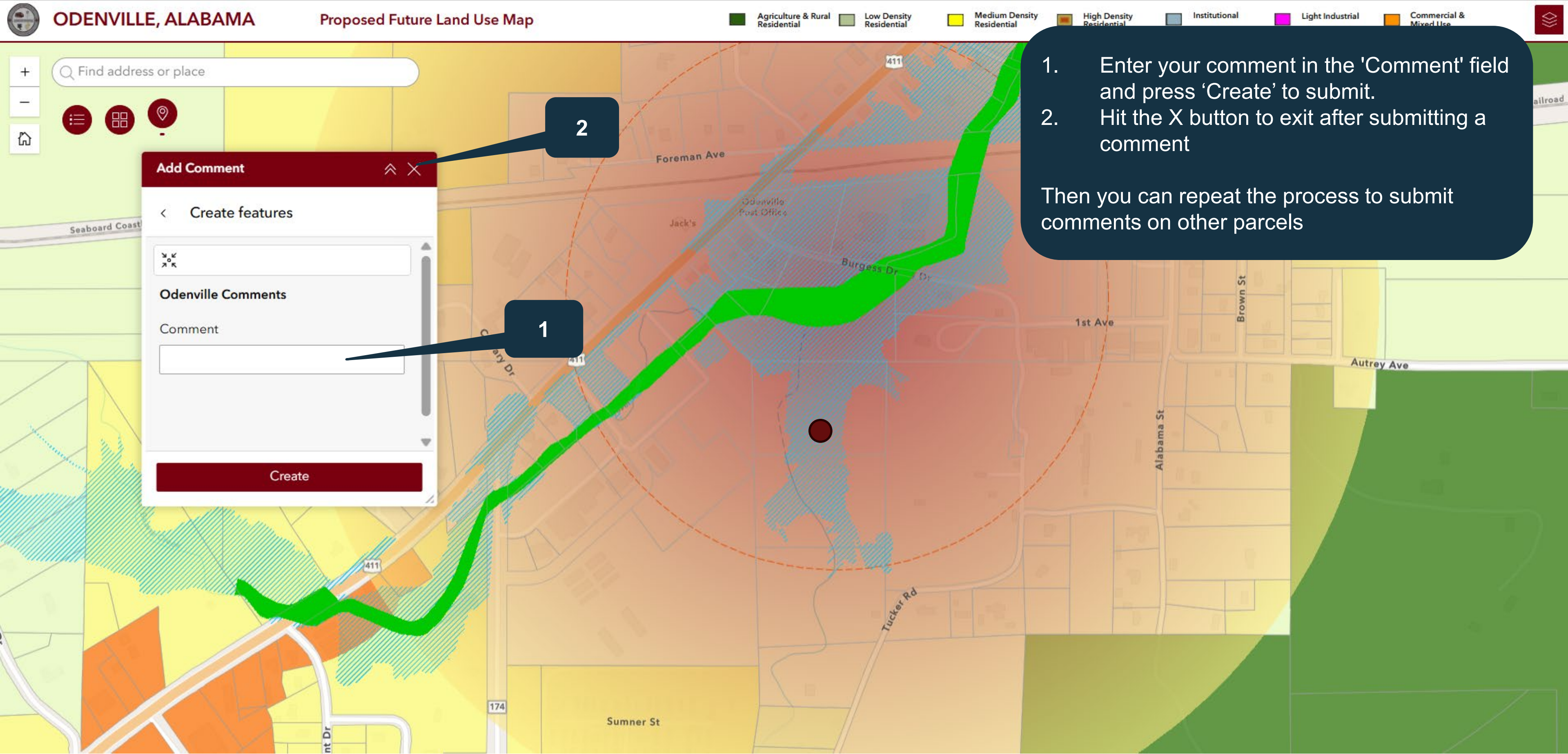
1. Click the legend button
2. Click the individual parcel to view a callout box

# To comment:



1. Zoom into the general area of the map where you want to comment
2. Click the comment button on the upper left
3. Click the comment feature next to the red point
4. Click on the parcel you want to make a comment on

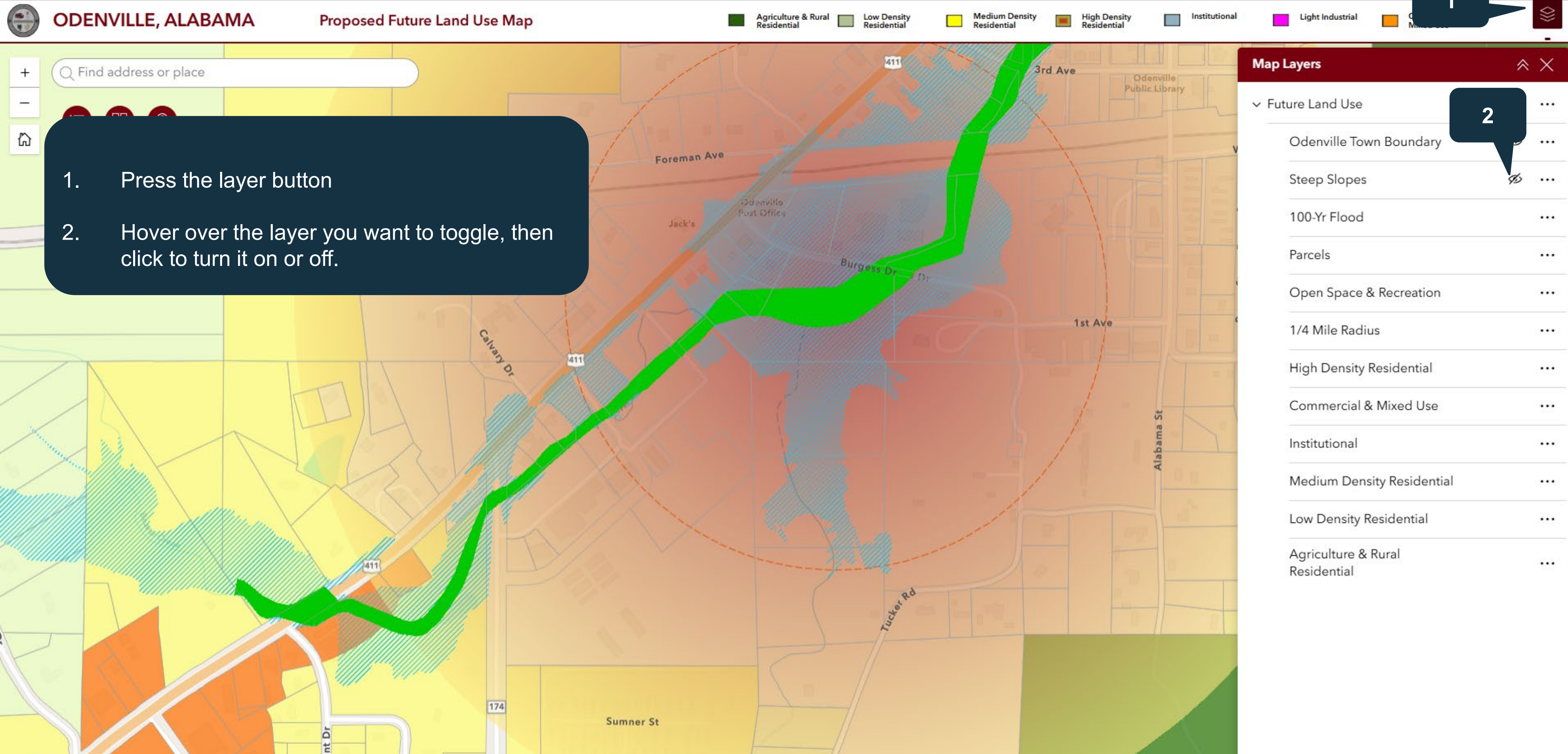
# To comment:



1. Enter your comment in the 'Comment' field and press 'Create' to submit.
2. Hit the X button to exit after submitting a comment

Then you can repeat the process to submit comments on other parcels

# To turn layers on or off:



1. Press the layer button
2. Hover over the layer you want to toggle, then click to turn it on or off.

1

2

# To see if a parcel is inside or outside the city limits:

**ODENVILLE, ALABAMA** Proposed Future Land Use Map

Legend: Agriculture & Rural Residential, Low Density Residential, Medium Density Residential, High Density Residential, Institutional, Light Industrial, Commercial & Mixed Use

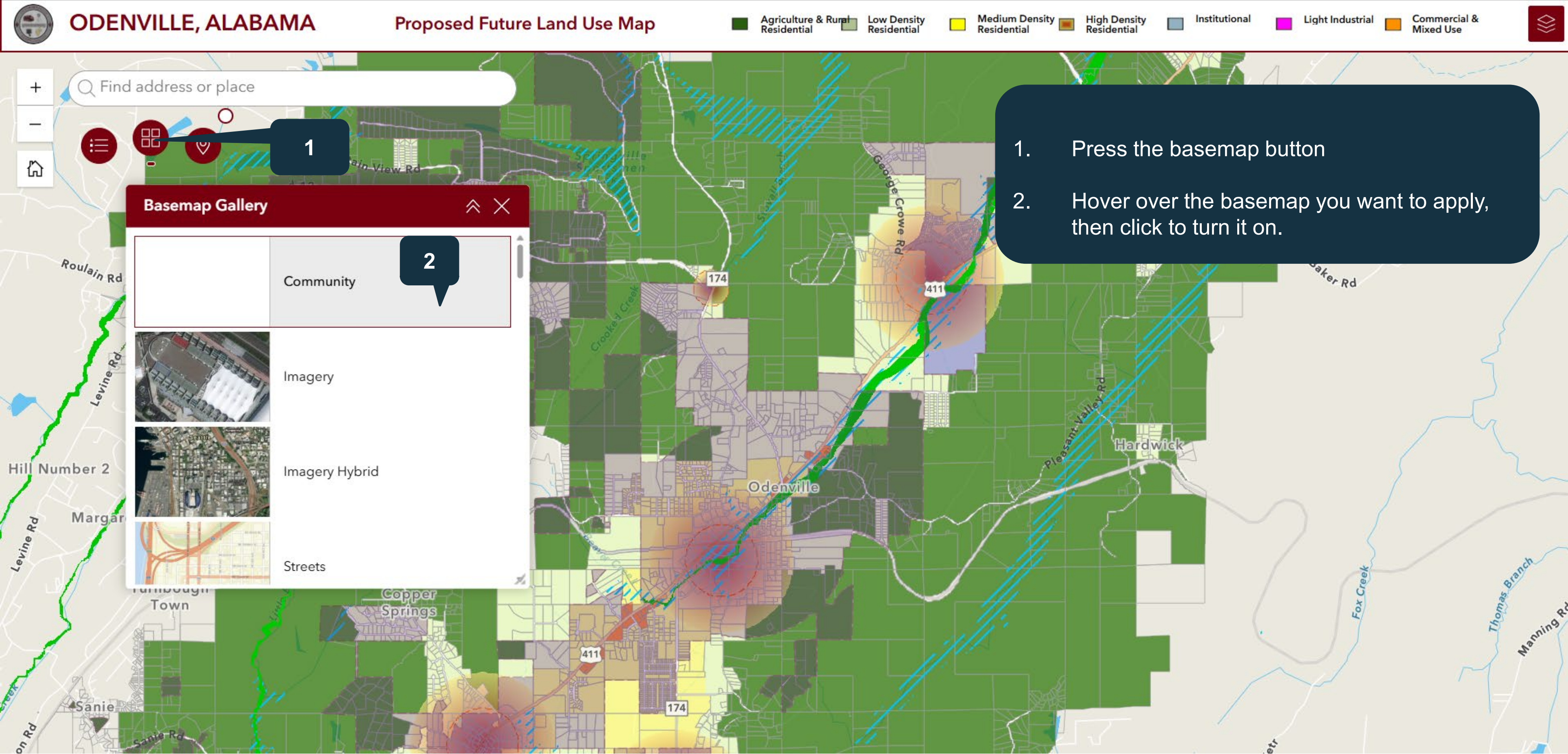
Map Layers:

- Future Land Use
  - Odenville Town Boundary
  - Transparency** (Slider: 0 to 100%)
  - 1/4 Mile
  - High Density Residential
  - Commercial & Mixed Use
  - Institutional
  - Medium Density Residential
  - Low Density Residential
  - Agriculture & Rural Residential

Callout Box:

1. Press the layer button
2. Check or uncheck Gardendale City Boundary (Filled)
3. Press the three dots next to the layer and click "Transparency"
4. Use the slider to adjust opacity of the layer.

# To change the basemap:



1. Press the basemap button
2. Hover over the basemap you want to apply, then click to turn it on.